

the **Whitworth**

***“For the perpetual gratification of
the people of Manchester”***

Transforming the Whitworth

GATHERING OF STRANGERS





1897 Beaumont
Addition of South Gallery









~~~~~  
WE'VE BEEN  
BUILDING  
SOMETHING  
~~~~~

14 FEBRUARY 2015

the **Whitworth**

manchester.ac.uk/whitworth

~~~~~

FALL  
IN  
LOVE  
AGAIN

~~~~~

the **Whitworth**

REOPENS 14 FEBRUARY 2015



With love,

W

Whitworth
Weekending











Draw

This space is for you to be creative.
Can you draw something to answer the
question about the new Whitworth.

What will it be like?

MANCHESTER
1824
The University of Manchester
Whitworth Art Gallery



The Whitworth collection

Ten of the best

The Whitworth is home to world-class
international modern and contemporary
artwork. We are proud to display an
exclusive collection of some of the
most significant works.

To see all the Whitworth collection
go to www.manchester.ac.uk/whitworthcollection

MANCHESTER
1824

The University of Manchester
Whitworth Art Gallery



never more open than when closed...















Staff only

Sister

NO ENTRY
HOSPITAL
PERSONNEL
ONLY

Central Manchester
University Hospitals
NHS
Foundation Trust

Catherine Allington
Nurse





WELLY
WALK

the Whitworth

What will you discover on your Whitworth Welly Walk adventure?

Let your feet and your imagination roam free

Explore the great outdoors with our nature inspired rhymes

Green leaf, yellow leaf, red leaf, brown,
Collect the best one you can find on the ground.

The willow is wobbling and waving around,
Imagine the drawing it makes on the ground.

Busy squirrels whizzing all over the park,
Let's make them a den for when it gets dark.

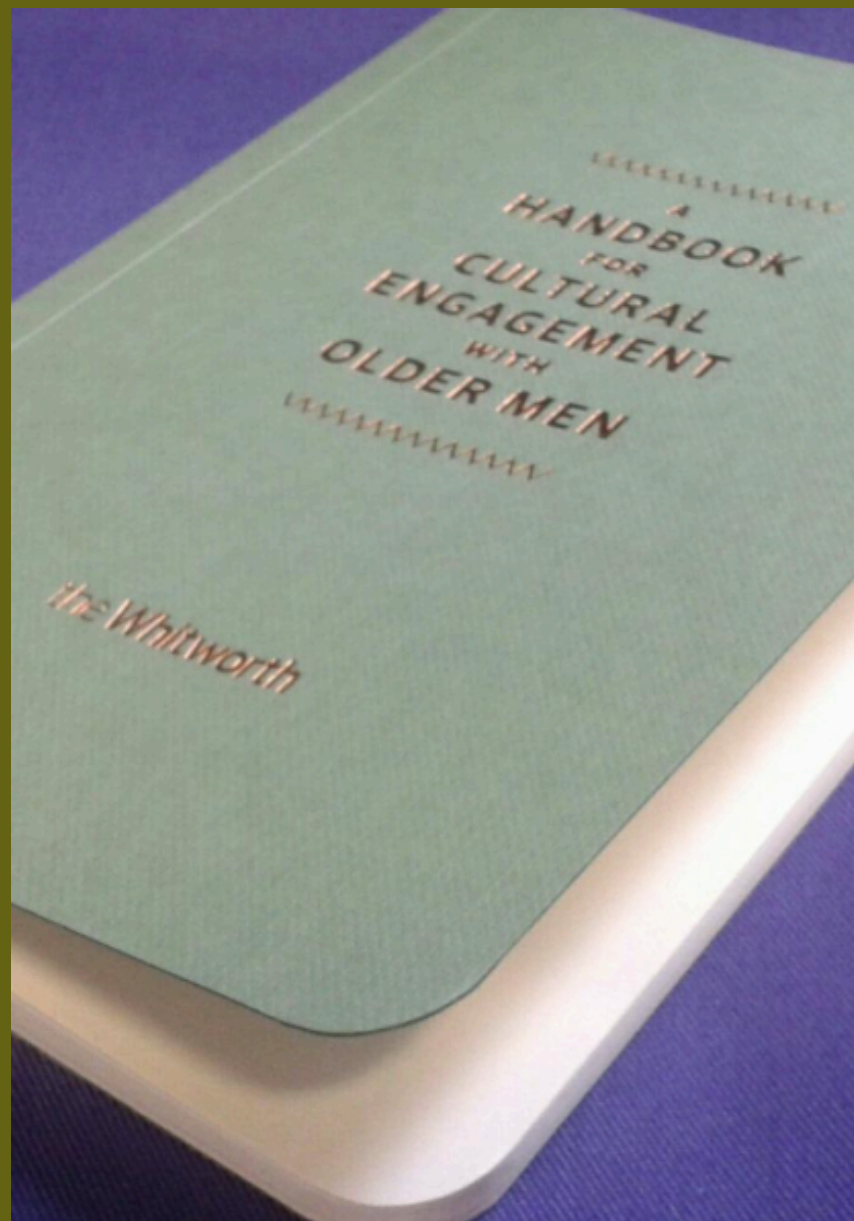
Find one thing that's shiny, one thing that's smooth,
One thing that's squishy, and one thing that moves.

Look up close, look far away,
What's the most colourful thing you can see today?

How many steps to the nearest tree?
Let's count them together, one, two three...



the Whitworth





A MIDNIGHT MODERN CONVERSATION

William Hogarth (1732–1733)

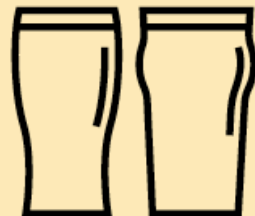
Ink, etching.

CASE STUDIES



BRANDING FOR BLOKES

Focusing the branding and marketing for more aesthetic activities on the impact and benefits instead of the content, to avoid any barriers in recruitment due to gender stereotypes.



KEEP IT REGULAR

Groups prefer weekly sessions to one off, short projects. Think carefully about the sustainability of these projects and consider a long term funding plan for these activities. Try to develop collaborative partnerships with key stakeholders to strengthen your project.



the Whitworth



Handmade

Weekly, sociable craft workshops, produced by and for older people in partnership with Age Friendly Manchester



Danger

Men at work





"They look well worn, don't they?
Hard working hands. A
stonemason's hands"

Response to Henry Moore, Artist Hands.

the Whitworth



"I've heard you all talk about what Manchester can do for older people, when is somebody going to ask, what can older people do for Manchester?"

Cultural Champion



MAIN EDITION

ONLY 52p INCLUDING FREE DELIVERY TO SUBSCRIBERS SEE PAGE 2

65p

Manchester Evening News

A friend dropping in

BRITAIN'S BIGGEST REGIONAL NEWS TITLE

TUESDAY, 6 OCTOBER, 2015



FAIR DEAL DEVO

GIVE US A FAIR DEAL ON DEVO

GREATER MANCHESTER TITLES UNITE TO DEMAND FUNDS TO MAKE DEVOLUTION WORK PAGES 6&7 #fairdealdevo

Hopwood Hall College

Enrol with us at both our Middleton and Rochdale campuses

We've got the **highest success rates** in Greater Manchester for the **second year running!**



tel 0161 643 7560 www.hopwood.ac.uk

Health + Culture

How cultural experiences can
improve health and wellbeing

About

Publications &
Case Studies

+Culture Shots
2015

Programmes &
Artists

Events Diary

Contact

Twitter @health_culture

A fantastic launch of the Medical Humanities Laboratory @ the Whitworth tonight. <https://t.co/xkOFgB6qDO>

About 18 hours ago

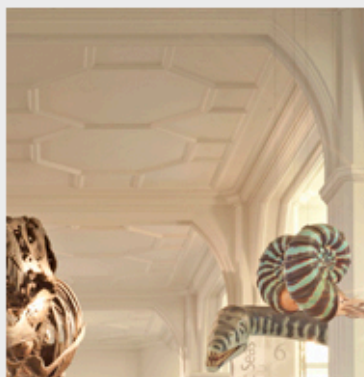
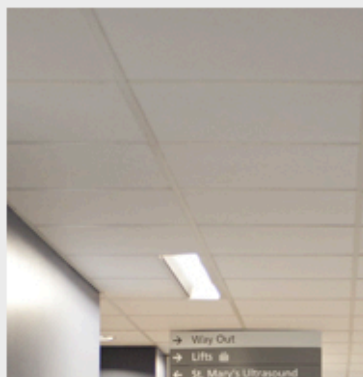
A powerful partnership

More people than ever visit Greater Manchester's museums and galleries. Yet they are much more than just enjoyable places to visit. They make a real contribution to health and wellbeing, with recent research suggesting that those who regularly attend actually live longer.

It is for this reason that healthcare professionals frequently join forces with museums and galleries – often with impressive results, whether for patients or healthcare professionals themselves.

But don't just take our word for it. Download the [case studies](#) or read Health and Culture to find out about the ground-breaking partnerships between healthcare and cultural professionals that are already taking place. Check our blog for the latest news, or read about our week-long series of cultural taster sessions that took place across five hospital sites in February.

This website is designed to inform and inspire. We want you to start





How museums and galleries can enhance health and wellbeing



IT'S GRIM UP NORTH





whitworthart

FOLLOW

201 likes

12w

whitworthart Have you seen our flowers blossoming in our Art Garden yet? Landscaped by the award winning Garden Designer, Sarah Price, our Art Garden is a fabulous place to play, create and relax this summer season! [#cafeinthetrees](#) [#galleryinthepark](#) [#museumoftheyear](#)

the Whitworth







whitworthart
Whitworth Park M...

FOLLOW

74 likes

39w

whitworthart Blakean Abstract
#galleryinthepark

sophiecolettegoodchild @laurenmaccabee
@lydiapool damn damn damn why are we
not back!

laurenmaccabee I amm!! Got tickets to the
after party too! Owh we'll all have to go
together next time we're up xx

laurenmaccabee @sophiecolettegoodchild
hannahmcv @mrsjonesey @sophysylvester
xx

creepyorange is this not tonight ?



whitworthart

FOLLOW

98 likes

21w

whitworthart "Here in this park on the night of Friday 13 February 2015 a meteorite landed and was lost"

#museumoftheyear #corneliaparker #graphene

the Whitworth

~~~~~  
WHITWORTH  
YOUNG  
CONTEMPORARIES  
~~~~~

A CREATIVE PROGRAMME LED BY AND FOR
YOUNG PEOPLE AGED 15-25



What we do

WYC PRESENTS

Music, visual and performance events

WYC MAKES

Arts workshops led by emerging artists

WYC SPEAKS

Debate, discussions and spoken word

WHITWORTH ON FIRE

Circus, fire workshops and events

Get involved:

<http://whitworthyc.org.uk/>

Follow us:

@WhitworthYC | [Instagram.com/whitworthyc/](https://www.instagram.com/whitworthyc/) | [facebook/whitworth/wyc](https://www.facebook.com/whitworth/wyc)

Whitworth Young Contemporaries is part of Circuit, led by Tate and funded by the Paul Hamlyn Foundation, a four year national programme connecting 15-25 year olds to the arts in galleries and museums working in partnership with the youth and cultural sector.

MANCHESTER
1824

The University of Manchester
The Whitworth

ow

the punk

The Whit
North

is a place where
people learn
how to be
wonderful

WITH LOVE

including
me

#museumoftheyear
@WhitworthArt

the **Whitworth**

Thank you

esme.ward@manchester.ac.uk

@ward_esme